

FILE G:\In\SFHWY00360\PlanSet\SFHWY00360\_A1.dwg  
 DATE 4/13/2023 8:00 LAYOUT A1  
 DESIGNED RM  
 CHECKED BT, TE  
 DRAFTED IMS

# STATE OF ALASKA

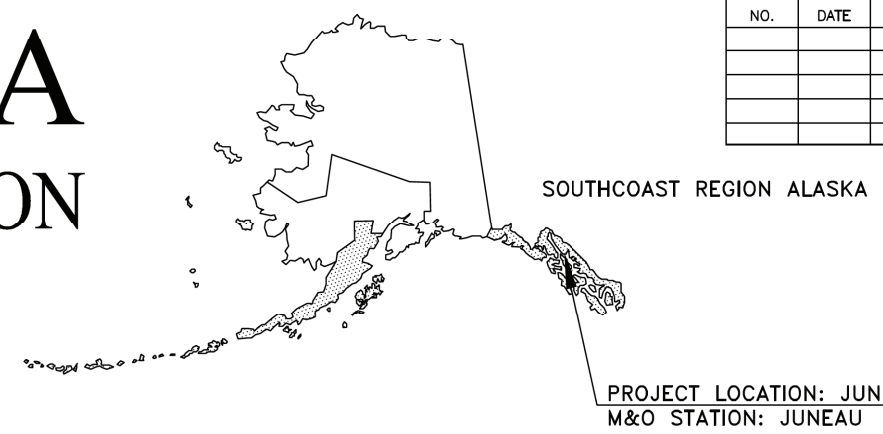
## DEPARTMENT OF TRANSPORTATION & PUBLIC FACILITIES

### PROPOSED HIGHWAY PROJECT

# JNU EXPERIMENTAL PREVENT. MNTNC USING SAND SEAL TECH, GLCR HWY

SAND SEAL APPLICATION  
SFHWY00360/0003269

NO.	DATE	REVISIONS	STATE	PROJECT DESIGNATION	YEAR	SHEET NO.	TOTAL SHEETS
			ALASKA	0003269\SFHWY00360	2023	A1	17
				CDS ROUTE: 296222	MILEPOINT: 0.35 - 1.6		
				LATITUDE: 58°20'15" N	LONGITUDE: 134°29'17" W		



PROJECT SUMMARY	
WIDTH OF SAND SEAL	10 FT
LENGTH OF SAND SEAL	6,240 FT
LENGTH OF PROJECT	6,240 FT

DESIGN DESIGNATIONS	
PROJECT TYPE	PREVENTIVE MAINTENANCE
FUNCTIONAL CLASS	MAJOR COLLECTOR
AADT (2020)	2,450
DESIGN SPEED	40 MPH

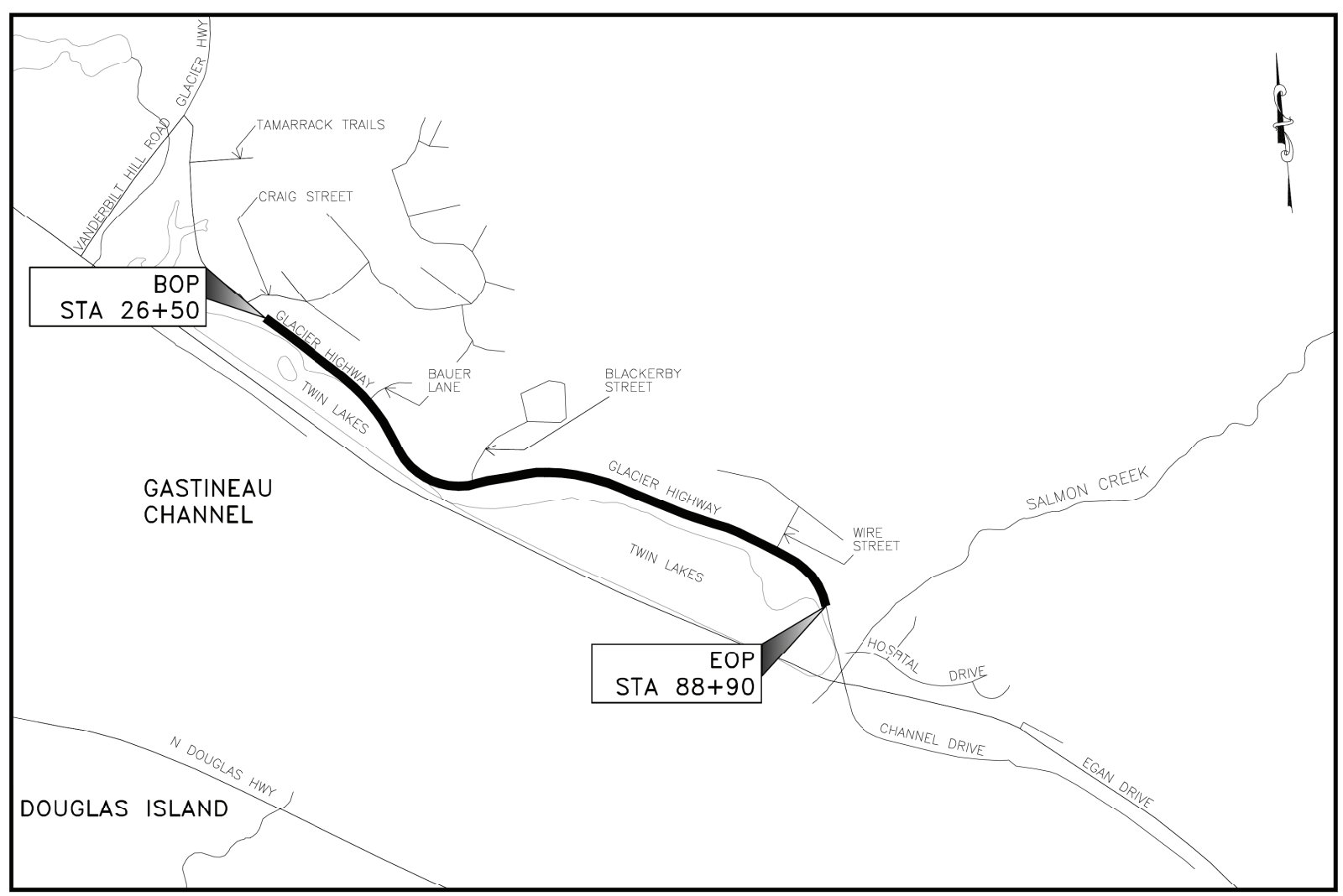
**AS-BUILT**

CONTRACTOR: Colaska, Inc., dba Secon  
 PROJECT ENGINEER: Vernon R. Perry  
 BEGIN DATE: 08/28/2023  
 END DATE: 09/06/2023

The undersigned hereby certifies that this duplicated document is an exact and true copy of the original.

*Hollie Rosella*

August 7, 2023



**VICINITY MAP**  
JUNEAU

USE THESE PLANS IN CONJUNCTION WITH THE STATE OF ALASKA STANDARD SPECIFICATIONS FOR HIGHWAY CONSTRUCTION, 2020 EDITION AND THE PROJECT SPECIAL PROVISIONS.

STATE OF ALASKA  
DEPARTMENT OF TRANSPORTATION & PUBLIC FACILITIES  
6860 GLACIER HIGHWAY, JUNEAU, AK 99801  
(907) 465-1763

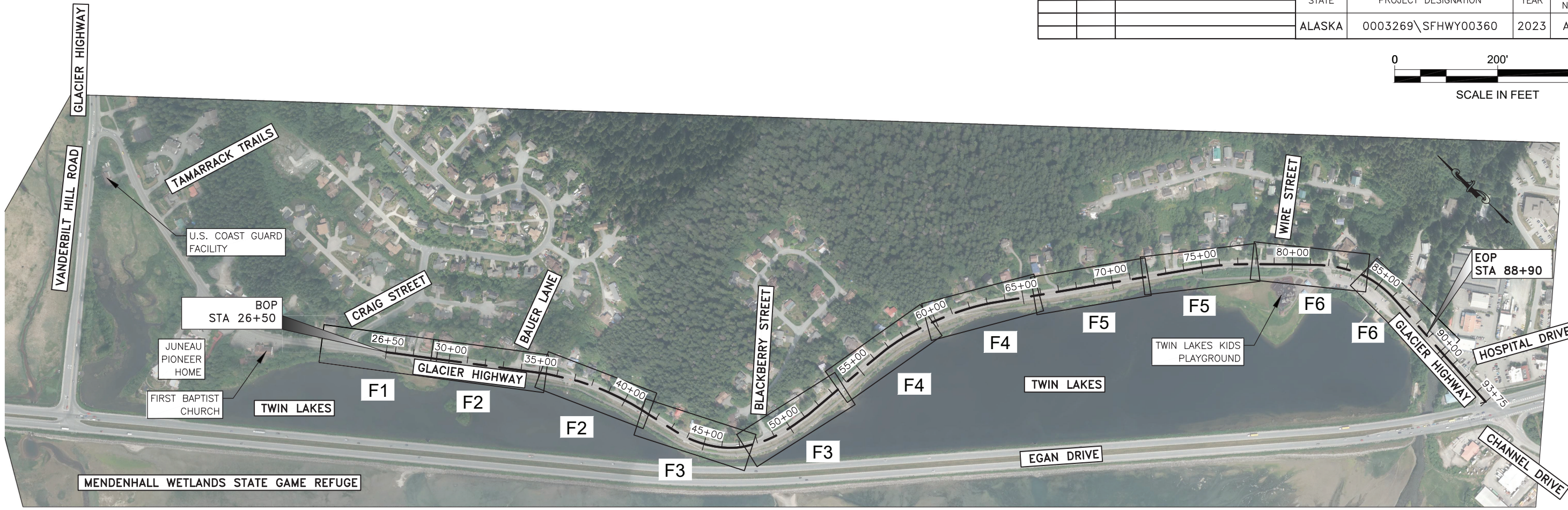
APPROVED: *[Signature]* 4/14/2023  
REGIONAL PRECONSTRUCTION ENGINEER  
KIRK MILLER, P.E. DATE

CONCUR: *[Signature]* 4/27/2023  
REGIONAL DIRECTOR  
CHRISTOPHER GOINS, P.E., C.M. DATE

Record Drawings have been reviewed by the Project Engineer, and represent to the best of my knowledge, the Project as constructed.

*[Signature]*  
PE

NO.	DATE	REVISION	STATE	PROJECT DESIGNATION	YEAR	SHEET NO.	TOTAL SHEETS
			ALASKA	0003269\SFHWY00360	2023	A2	17



THE FOLLOWING STANDARD PLANS APPLY TO THIS PROJECT:  
N/A

### ABBREVIATIONS

AK	ALASKA	MIN	MINIMUM
AS	ALASKA STATUES	MNTNC	MAINTENANCE
BOP	BEGINNING OF PROJECT	MPH	MILES PER HOUR
CE	CIVIL ENGINEER	N	NORTH
CGP	CONSTRUCTION GENERAL PERMIT	N/A	NOT APPLICABLE
CL	CENTER LINE	NAV	NORTH AMERICAN DATUM
DR	DRIVE	NAVD	NORTH AMERICAN DATUM VERTICAL
E	EAST	NO	NUMBER
EOP	END OF PROJECT	P.E.	PROFESSIONAL ENGINEER
ESCP	EROSION CONTROL PLAN	R/RT	RIGHT
EXPERIMNTL	EXPERIMENTAL	RD	ROAD
FT	FEET	S	SOUTH
GALS	GALLONS	SD	STORM DRAIN
GLCR	GLACIER	ST	STREET
HWY	HIGHWAY	STA	STATION
JNU	JUNEAU	SY	SQUARE YARD
L	LEFT	TECH	TECHNOLOGY
LBS	POUNDS	TCP	TRAFFIC CONTROL PLANS
LN	LANE	W	WEST
M&O	MAINTENANCE & OPERATIONS		

### MONUMENT LEGEND

DESCRIPTION	SYMBOL
PRIMARY ROW MONUMENT	⊕

### PROJECT LEGEND

CATCH BASIN OR DROP INLET	
CONSTRUCTION CENTERLINE	
INLET PROTECTION	
SAND SEAL APPLICATION	
STORM DRAIN	
SURFACE FLOW DIRECTION	

Record Drawings have been reviewed by the Project Engineer, and represent to the best of my knowledge, the Project as constructed.

PE



STATE OF ALASKA DEPARTMENT OF TRANSPORTATION AND PUBLIC FACILITIES  
6860 GLACIER HIGHWAY, JUNEAU, AK 99801  
(907) 465-1763  
JNU EXPERIMNTL PREVENT. MNTNC USING SAND SEAL TECH, GLCR HWY  
LAYOUT, INDEX OF SHEETS, PROJECT LEGEND

INDEX OF SHEETS	
SHEET NO	DESCRIPTION
A1	TITLE SHEET
A2	LAYOUT, INDEX OF SHEETS, PROJECT LEGEND
SCS1-SCS4	SURVEY CONTROL SHEETS
B1	TYPICAL SECTIONS
C1	ESTIMATE OF QUANTITIES
F1-F6	PLAN VIEW & ESCP
T1-T3	TRAFFIC CONTROL PLANS

FILE G:\nu\SFHWY00360\Plans\set\SFHWY00360\_A2.dwg DATE 4/12/2023 15:21 LAYOUT A2 DESIGNED RM CHECKED BT, TE DRAFTED MS

DRAWING LOCATION G:\jnu\SFHWY00360\SV\CD\00360\_SCS\_031723.dwg  
 DATE TIME 4/13/2023 14:50  
 LAYOUT A2  
 SCALE  
 XREFS  
 DESIGNED J.PAPOI  
 CHECKED E.PEDERSEN  
 DRAFTED J.PAPOI

NO.	DATE	REVISION	STATE	PROJECT DESIGNATION	YEAR	SHEET NO.	TOTAL SHEETS
			ALASKA	0003269/SFHWY00360	2023	SCS 1	17

**SURVEY CONTROL STATEMENT:**

THIS SURVEY WAS PERFORMED IN NAD83(2011) AK STATE PLANE ZONE 1 GRID. ELEVATIONS SHOWN ARE REFERENCED TO NAVD88.

ALL BEARINGS AND DISTANCES AS SHOWN ARE GRID. CONVERGENCE AT CONTROL POINT 111 (AFE B) IS -0° 41' 24". COMBINED SCALE FACTOR IS 0.99993031. TO CONVERT GRID DISTANCES TO GROUND DISTANCES MULTIPLY BY 1.00006970.

EXISTING SURVEY CONTROL						
POINT #	NORTHING	EASTING	ELEVATION	DESCRIPTION	STATION	OFFSET
101	2373702.90	2531080.85	25.46	ALCAP2.5"_SET	92+65.62	29.52R


EXISTING RW SHOULDER MONUMENTS						
POINT #	NORTHING	EASTING	ELEVATION	DESCRIPTION	STATION	OFFSET
102	2374327.48	2531195.97	26.01	BC2.5"_FND	86+32.74	23.50L
117	2375036.10	2530825.45	29.35	BC_SH MON	78+18.96	19.23L
118	2375312.38	2530526.96	28.62	BC_SH MON	74+14.85	19.81L
119	2375915.25	2529746.24	28.37	BC_SH MON	64+28.45	18.91L
120	2376262.17	2528902.61	27.98	BC_SH MON	55+12.13	21.00L
121	2376293.30	2528649.72	28.21	BC_SH MON	52+57.61	20.73L
122	2376428.09	2528183.00	27.01	BC_SH MON	47+57.57	19.09L
123	2376853.56	2527953.09	29.71	BC_SH MON	42+41.64	19.07L
124	2377839.81	2527489.05	30.02	BC_SH MON	31+45.11	19.58L
125	2378683.35	2526896.47	45.84	BC_SH MON	N/A	N/A

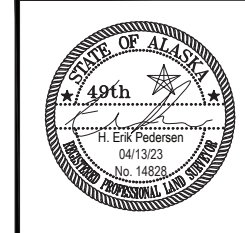
EXISTING SHOULDER MONUMENTS SHALL BE PRESERVED IN PLACE. IF NECESSARY SHOULDER MONUMENTS SHALL BE REFERENCED PRIOR TO DISTURBANCE AND REPLACED AT THEIR ORIGINAL HORIZONTAL POSITION. A RECORD OF MONUMENT FORM IN ACCORDANCE WITH A.S.34.65.040 SHALL BE SUBMITTED TO DOT&PF PROJECT ENGINEER FOR REVIEW PRIOR TO RECORDING FOR EACH MONUMENT.

**MONUMENT NOTES:**

- IF ANY PAIR OF CONTROL POINTS DISAGREES FROM PUBLISHED VALUE BY MORE THAN 1:10,000 HORIZONTALLY OR VERTICALLY THEN A THIRD NETWORK POINT MUST BE TIED TO ASCERTAIN WHICH POINT IS IN ERROR OR HAS BEEN DISTURBED.
- WHETHER LISTED OR NOT, ALL PROPERTY MONUMENTS, PROPERTY MARKERS, CORNERS OR ACCESSORIES WHICH WILL BE DISTURBED OR BURIED SHALL BE REFERENCED PRIOR TO BEING DISTURBED, AND RE-ESTABLISHED IN THEIR ORIGINAL HORIZONTAL POSITION AND A RECORD OF MONUMENT FORM IN ACCORDANCE WITH (A.S.34.65.040) AND (A.S.19.10.260) SHALL BE SUBMITTED TO THE CONSTRUCTION ENGINEER FOR REVIEW PRIOR TO RECORDING. COORDINATE VALUES LISTED ARE FOR INFORMATIONAL PURPOSES AND SHOULD BE USED TO RESET MONUMENTS ONLY AS A LAST RESORT.
- WHEN POSSIBLE ALL ORIGINAL PRIMARY MONUMENTS SHALL BE SAVED AND RESET IN THEIR ORIGINAL HORIZONTAL POSITION AND A RECORD OF MONUMENT FORM IN ACCORDANCE WITH (A.S.34.65.040) AND (A.S.19.10.260) SHALL BE SUBMITTED TO THE CONSTRUCTION ENGINEER FOR REVIEW PRIOR TO RECORDING.
- RIGHT OF WAY LOCATION IS SHOWN FOR GRAPHICAL ORIENTATION PURPOSES ONLY. REFER TO ALASKA DOT&PF RIGHT OF WAY MAPS FOR RIGHT OF WAY INFORMATION.
- HORIZONTAL AND VERTICAL CONTROL MUST BE FIELD VERIFIED BY THE CONTRACTOR. DISCREPANCIES WILL BE REPORTED TO DOT&PF CONSTRUCTION PROJECT ENGINEER.

Record Drawings have been reviewed by the Project Engineer, and represent to the best of my knowledge, the Project as constructed.

PE 



STATE OF ALASKA  
 DEPARTMENT OF TRANSPORTATION  
 AND PUBLIC FACILITIES  
 6860 Glacier Highway Juneau Ak. 99801  
 (907) 465-1763

**JNU EXPERIMENTAL PREVENTIVE  
 MAINTENANCE USING SAND SEAL TECH  
 GLACIER HWY  
 SURVEY CONTROL SHEET**

DESIGNED: J.PAPOI  
 CHECKED: E.PEDERSEN  
 DRAFTED: J.PAPOI  
 XREFS  
 SCALE  
 LAYOUT: A3  
 DATE: 4/13/2023 14:50  
 TIME  
 DRAWING LOCATION: Q:\Jnu\SFHWY00360\SV\0360\_SCS\_031723.dwg

NO.	DATE	REVISION	STATE	PROJECT DESIGNATION	YEAR	SHEET NO.	TOTAL SHEETS
			ALASKA	0003269/SFHWY00360	2023	SCS 2	17

### TWIN LAKES DESIGN ALIGNMENT

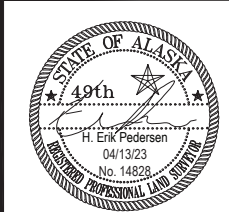
SEGMENT	STATION	NORTHING	EASTING	DISTANCE	BEARING	STATION	RADIUS	LENGTH	DELTA
L1	26+50.00	2378234.03	2527188.87	885.77	S35° 01' 23"E	35+35.77			
C1	35+35.77	2377508.65	2527697.22			35+42.38	71.69	6.61	5°16'51"
L2	35+42.38	2377503.07	2527700.76	175.87	S29° 44' 32"E	37+18.25			
C2	37+18.25	2377350.37	2527788.01			37+25.06	71.69	6.81	5°26'43"
L3	37+25.06	2377344.31	2527791.10	91.72	S24° 17' 49"E	38+16.78			
C3	38+16.78	2377260.71	2527828.84			41+44.94	1543.39	328.16	12°10'57"
L4	41+44.94	2376945.21	2527916.85	185.66	S10° 24' 59"E	43+30.60			
C4	43+30.60	2376762.61	2527950.41			45+71.25	576.46	240.65	23°55'07"
C5	45+71.25	2376541.66	2528041.28			47+38.30	405.12	167.05	23°37'31"
L5	47+38.30	2376422.33	2528156.48	82.18	S57° 31' 10"E	48+20.48			
C6	48+20.48	2376378.20	2528225.81			50+28.64	777.34	208.16	15°20'34"
L6	50+28.64	2376308.04	2528421.13	97.92	S78° 36' 01"E	51+26.56			
L7	51+26.56	2376288.69	2528517.12	357.85	S83° 00' 21"E	54+84.40			
L8	54+84.40	2376245.11	2528872.30	191.29	S82° 13' 24"E	56+75.70			
C7	56+75.70	2376219.23	2529061.83			57+97.06	1070.85	121.36	6°29'36"
C8	57+97.06	2376191.79	2529179.98			60+57.64	1606.74	260.59	9°17'33"
C9	60+57.64	2376100.55	2529423.77			63+18.45	1327.39	260.81	11°15'27"
L9	63+18.45	2375967.60	2529647.66	1176.41	S52° 16' 21"E	74+94.86			
C10	74+94.86	2375247.75	2530578.12			77+69.39	1771.58	274.54	8°52'44"
L10	77+69.39	2375059.82	2530777.87	218.86	S42° 18' 29"E	79+88.26			

### TWIN LAKES DESIGN ALIGNMENT

SEGMENT	STATION	NORTHING	EASTING	DISTANCE	BEARING	STATION	RADIUS	LENGTH	DELTA
C11	79+88.26	2374897.96	2530925.19			79+89.20	71.69	0.94	0°45'08"
L11	79+89.20	2374897.26	2530925.82	141.81	S41° 33' 21"E	81+31.01			
C12	81+31.01	2374791.14	2531019.89			83+94.10	657.09	263.09	22°56'26"
C13	83+94.10	2374565.72	2531152.11			86+03.85	549.81	209.74	21°51'27"
L12	86+03.85	2374358.55	2531175.43	770.97	S5° 39' 16"W	93+74.82			



Record Drawings have been reviewed by the Project Engineer, and represented to the best of my knowledge, the project is constructed.  
 H. Erik Pedersen  
 No. 14828  
 PE



STATE OF ALASKA  
 DEPARTMENT OF TRANSPORTATION  
 AND PUBLIC FACILITIES  
 6860 Glacier Highway Juneau Ak. 99801  
 (907) 465-1763  
**JNU EXPERIMENTAL PREVENTIVE  
 MAINTENANCE USING SAND SEAL TECH  
 GLACIER HWY  
 SURVEY CONTROL SHEET**

NO.	DATE	REVISION	STATE	PROJECT DESIGNATION	YEAR	SHEET NO.	TOTAL SHEETS
			ALASKA	0003269/SFHWHY00360	2023	SCS 3	17

DESIGNED: J. BAPPO  
 CHECKED: E. PEDERSEN  
 DRAFTED: J. BAPPO

XREFS

SCALE

LAYOUT A4

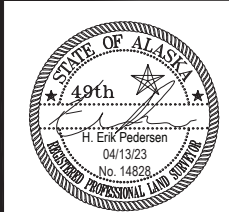
DATE TIME 4/13/2023 14:50

DRAWING LOCATION Q:\Jnu\SFHWHY00360\SV\C3D\00360\_SCS\_031723.dwg



Record Drawings have been reviewed by the Project Engineer and represent to the best of my knowledge for project as constructed.

*[Signature]*

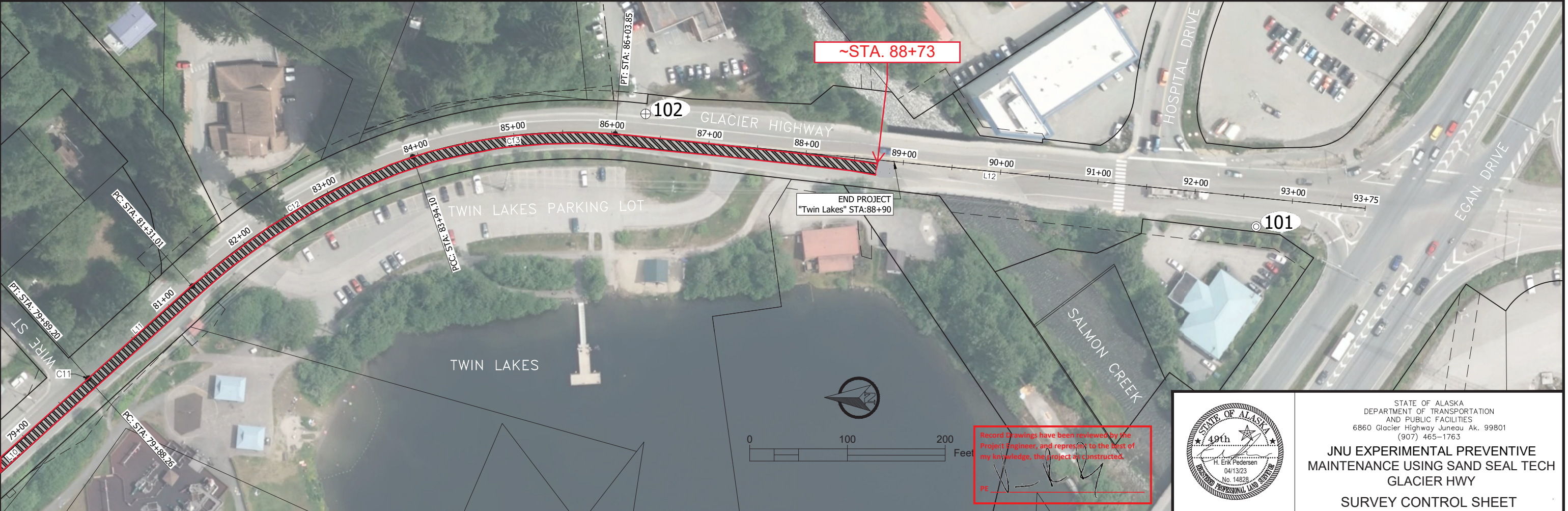


STATE OF ALASKA  
 DEPARTMENT OF TRANSPORTATION  
 AND PUBLIC FACILITIES  
 8860 Glacier Highway Juneau Ak. 99801  
 (907) 465-1763

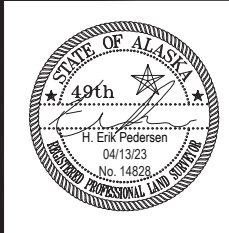
**JNU EXPERIMENTAL PREVENTIVE  
 MAINTENANCE USING SAND SEAL TECH  
 GLACIER HWY  
 SURVEY CONTROL SHEET**

NO.	DATE	REVISION	STATE	PROJECT DESIGNATION	YEAR	SHEET NO.	TOTAL SHEETS
			ALASKA	0003269/SFHwy00360	2023	SCS 4	17

DRAWING LOCATION: Q:\Jnu\SFHwy00360\SV\C3D\00360\_SCS\_031723.dwg  
 XREFS: J:AP01 E:PEDERSEN J:AP01  
 CHECKED: E:PEDERSEN  
 DESIGNED: J:AP01  
 DATE TIME: 4/13/2023 14:50  
 LAYOUT: A5  
 SCALE:  
 XREFS:

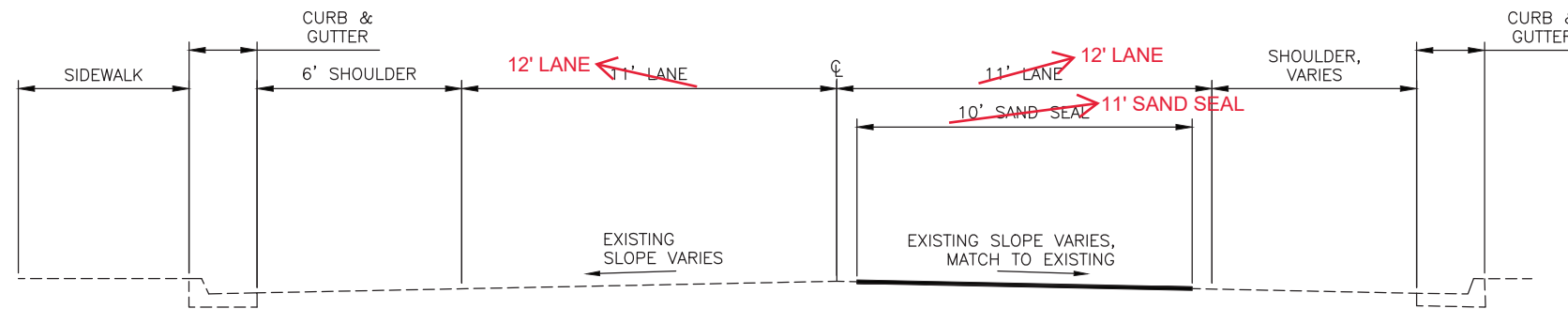


Record Drawings have been reviewed by the Project Engineer, and represent to the best of my knowledge, the project as constructed.  
 PE: *[Signature]*



STATE OF ALASKA  
 DEPARTMENT OF TRANSPORTATION  
 AND PUBLIC FACILITIES  
 6860 Glacier Highway Juneau Ak. 99801  
 (907) 465-1763  
**JNU EXPERIMENTAL PREVENTIVE  
 MAINTENANCE USING SAND SEAL TECH  
 GLACIER HWY  
 SURVEY CONTROL SHEET**

NO.	DATE	REVISION	STATE	PROJECT DESIGNATION	YEAR	SHEET NO.	TOTAL SHEETS
			ALASKA	0003269\SFHWHY00360	2023	B1	17



1 SAND SEAL APPLICATION (RT)  
 B1 NOT TO SCALE  
 STA 26+50 TO STA 88+90

FILE G:\nu\SFHWY00360\Planset\SFHWHY00360\_B1.dwg DATE 3/28/2023 11:16 LAYOUT B1 DESIGNED RM CHECKED BT, TE DRAFTED MS

Record Drawings have been reviewed by the Project Engineer, and represent to the best of my knowledge, the project as constructed.  
 PE *[Signature]*



STATE OF ALASKA DEPARTMENT OF TRANSPORTATION AND PUBLIC FACILITIES  
 6860 GLACIER HIGHWAY, JUNEAU, AK 99801  
 (907) 465-1763  
 JNU EXPERIMNTL PREVENT. MNTNC USING SAND SEAL TECH, GLCR HWY  
 TYPICAL SECTIONS

FILE G:\nu\SFHWY00360\Planset\SFHWY00360\_C1.dwg DATE 4/13/2023 8:03 LAYOUT QUANTITIES RM DESIGNED BT, TE CHECKED DRAFTED MS

NO.	DATE	REVISION	STATE	PROJECT DESIGNATION	YEAR	SHEET NO.	TOTAL SHEETS
			ALASKA	0003269\SFHWY00360	2023	C1	17

**AS-BUILT QUANTITIES**

~~**ESTIMATE OF QUANTITIES**~~

ITEM NUMBER	PAY ITEM	PAY UNIT	QUANTITY
404.2001.0000	EMULSIFIED ASPHALT SAND SEAL	SQUARE YARD	6,933
642.0001.0000	CONSTRUCTION SURVEYING	LUMP SUM	ALL REQUIRED
643.0002.0000	TRAFFIC MAINTENANCE	LUMP SUM	ALL REQUIRED
<del>643.0023.0000</del>	<del>TRAFFIC PRICE ADJUSTMENT</del>	<del>CONTINGENT SUM</del>	<del>ALL REQUIRED</del>
658.0001.0000	EROSION, SEDIMENT, AND POLLUTION CONTROL WITHOUT CGP COVERAGE	LUMP SUM	ALL REQUIRED
<del>658.0002.0000</del>	<del>ESCP CHANGES BY DIRECTIVE</del>	<del>CONTINGENT SUM</del>	<del>ALL REQUIRED</del>

**BASIS OF ESTIMATE**

ITEM NUMBER	PAY ITEM	ESTIMATING FACTOR	ESTIMATED QUANTITY
404.2001.0000	EMULSIFIED ASPHALT SAND SEAL	-	6,933 SY
	EMULSIFIED ASPHALT	0.15 GAL/SY	1,040 GALLONS
	SAND	0.8 LBS/SY	5,546 LBS

Record Drawings have been reviewed by the Project Engineer, and represent to the best of my knowledge, the project as constructed.

PE *[Signature]*

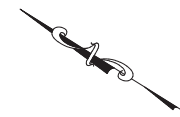
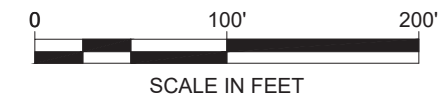


STATE OF ALASKA DEPARTMENT OF TRANSPORTATION AND PUBLIC FACILITIES  
 6860 GLACIER HWY, JUNEAU, AK 99801  
 (907) 465-1763

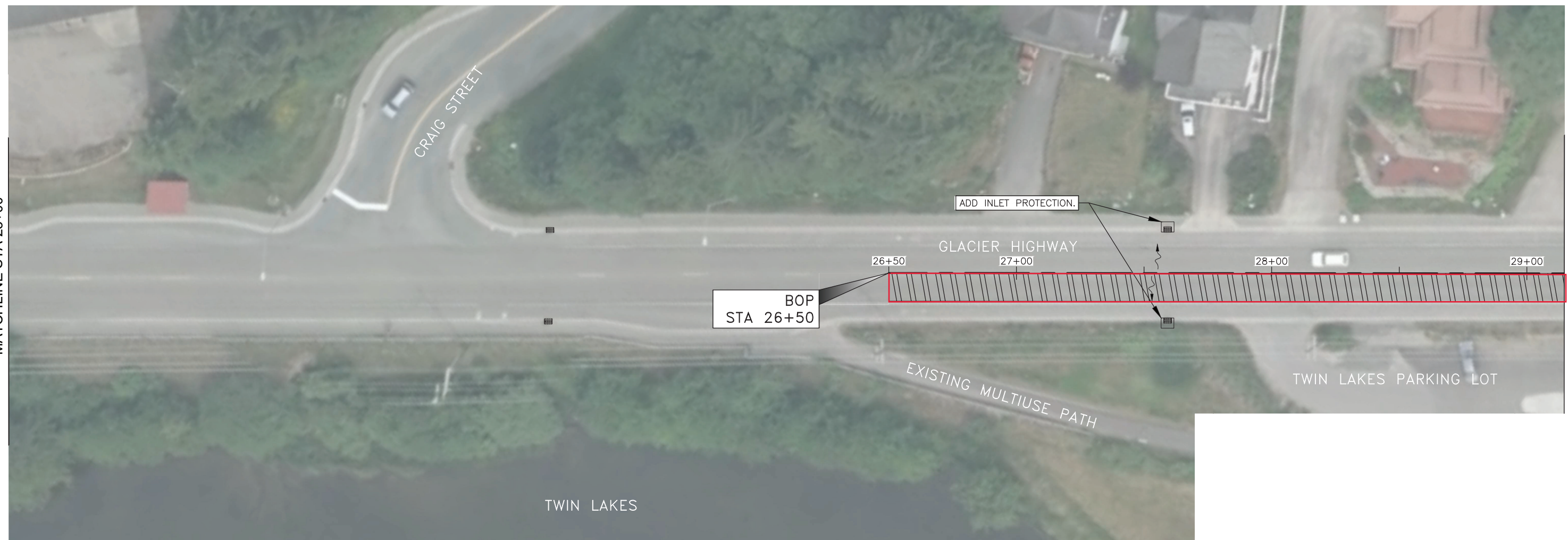
**JNU EXPERIMNTL PREVENT. MNTNC  
 USING SAND SEAL TECH, GLCR HWY**

ESTIMATE OF QUANTITIES

NO.	DATE	REVISION	STATE	PROJECT DESIGNATION	YEAR	SHEET NO.	TOTAL SHEETS
			ALASKA	0003269\SFHWHY00360	2023	F1	17



FILE G:\Inu\SFHWHY00360\PlanSet\SFHWHY00360\_F Sheets.dwg  
 DATE 4/4/2023 17:02 LAYOUT F1  
 DESIGNED RM  
 CHECKED BT, TE  
 DRAFTED MS



MATCHLINE STA 23+00

MATCHLINE STA 29+10

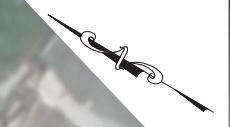
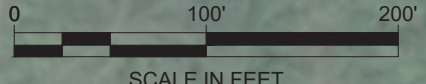
- ESCP NOTES:**
1. INLET PROTECTION IS TEMPORARY. SEE APPENDIX C, EROSION SEDIMENT CONTROL PLAN, OF THE SPECIFICATIONS.

ESCP NOT SEALED IN ACCORDANCE WITH ALASKA HIGHWAY PRECONSTRUCTION MANUAL SECTION 1120.7.3 DATED NOVEMBER 15, 2013  
 Record Drawings have been reviewed by the Project Engineer, and represent the best of my knowledge, the project as constructed.  
 PE *[Signature]*

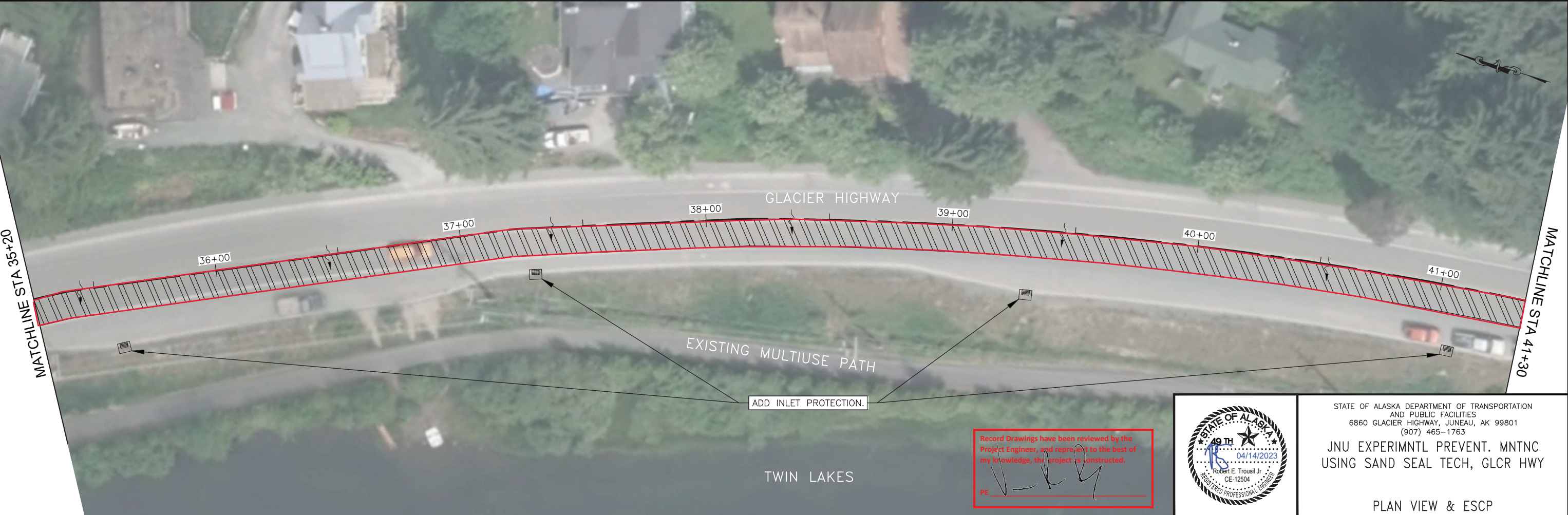


STATE OF ALASKA DEPARTMENT OF TRANSPORTATION AND PUBLIC FACILITIES  
 6860 GLACIER HIGHWAY, JUNEAU, AK 99801  
 (907) 465-1763  
**JNU EXPERIMNTL PREVENT. MNTNC USING SAND SEAL TECH, GLCR HWY**  
 PLAN VIEW & ESCP

NO.	DATE	REVISION	STATE	PROJECT DESIGNATION	YEAR	SHEET NO.	TOTAL SHEETS
			ALASKA	0003269\SFHWHY00360	2023	F2	17



ESCP NOT SEALED IN ACCORDANCE WITH ALASKA HIGHWAY PRECONSTRUCTION MANUAL SECTION 1120.7.3 DATED NOVEMBER 15, 2013



Record Drawings have been reviewed by the Project Engineer, and represent to the best of my knowledge, the project as constructed.

*[Signature]*  
PE



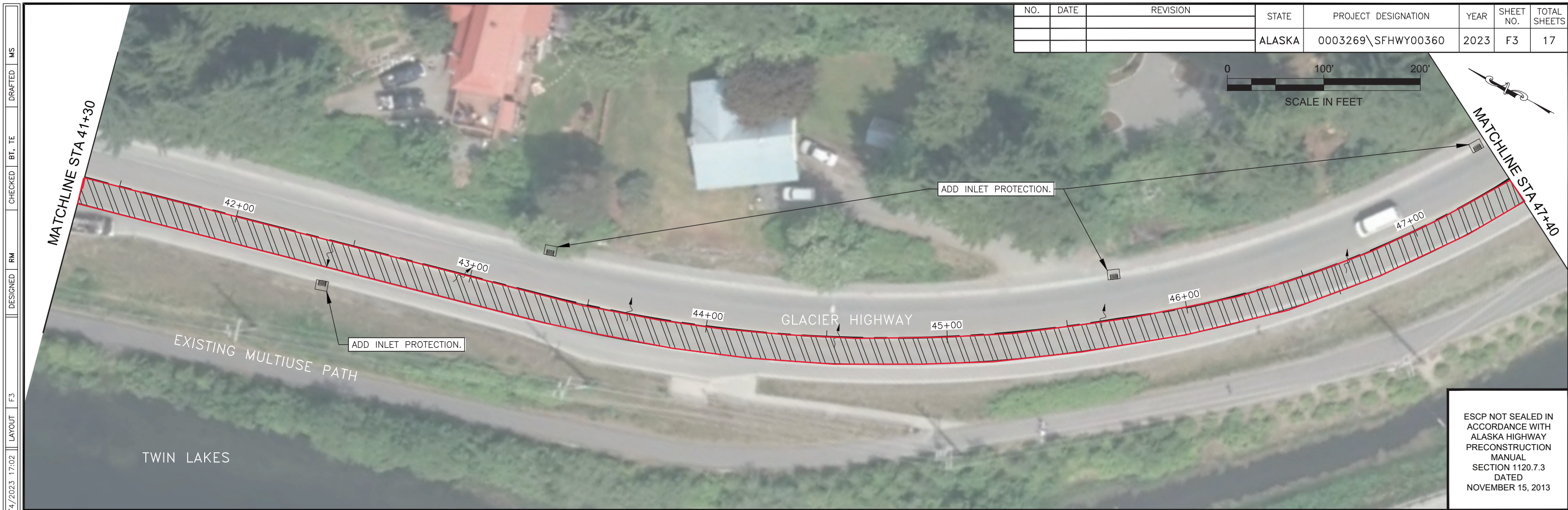
STATE OF ALASKA DEPARTMENT OF TRANSPORTATION AND PUBLIC FACILITIES  
6860 GLACIER HIGHWAY, JUNEAU, AK 99801  
(907) 465-1763

JNU EXPERIMNTL PREVENT. MNTNC USING SAND SEAL TECH, GLCR HWY

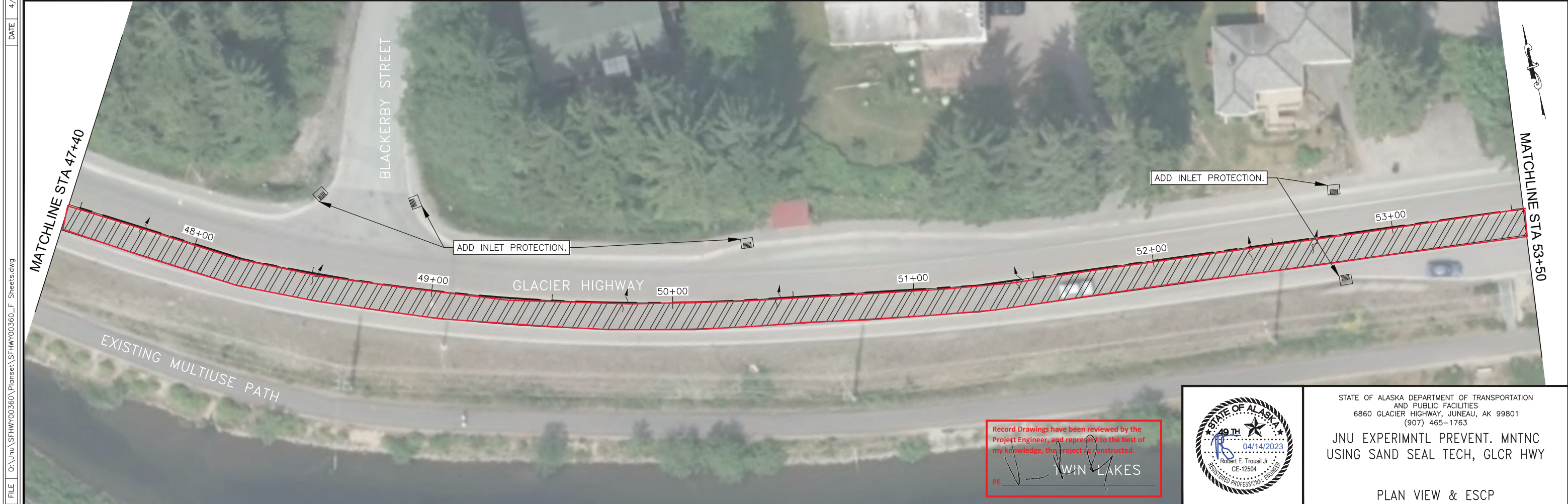
PLAN VIEW & ESCP

FILE G:\nu\SFHWY00360\PlanSet\SFHWHY00360\_F\_Sheets.dwg DATE 4/4/2023 17:02 LAYOUT F2 DESIGNED RM CHECKED BT, TE DRAFTED MS

NO.	DATE	REVISION	STATE	PROJECT DESIGNATION	YEAR	SHEET NO.	TOTAL SHEETS
			ALASKA	0003269\SFHWY00360	2023	F3	17



ESCP NOT SEALED IN ACCORDANCE WITH ALASKA HIGHWAY PRECONSTRUCTION MANUAL SECTION 1120.7.3 DATED NOVEMBER 15, 2013



Record Drawings have been reviewed by the Project Engineer, and represent to the best of my knowledge, the project as constructed.

*[Signature]*  
TWIN LAKES  
PE



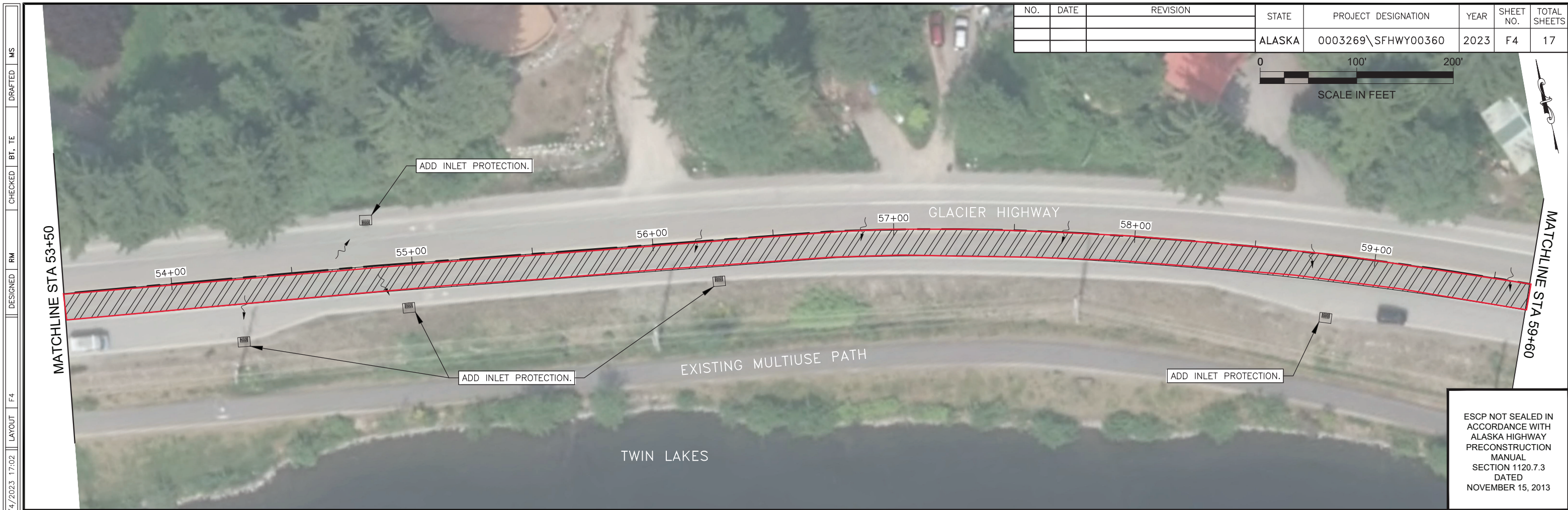
STATE OF ALASKA DEPARTMENT OF TRANSPORTATION AND PUBLIC FACILITIES  
6860 GLACIER HIGHWAY, JUNEAU, AK 99801  
(907) 465-1763

JNU EXPERIMNTL PREVENT. MNTNC USING SAND SEAL TECH, GLCR HWY

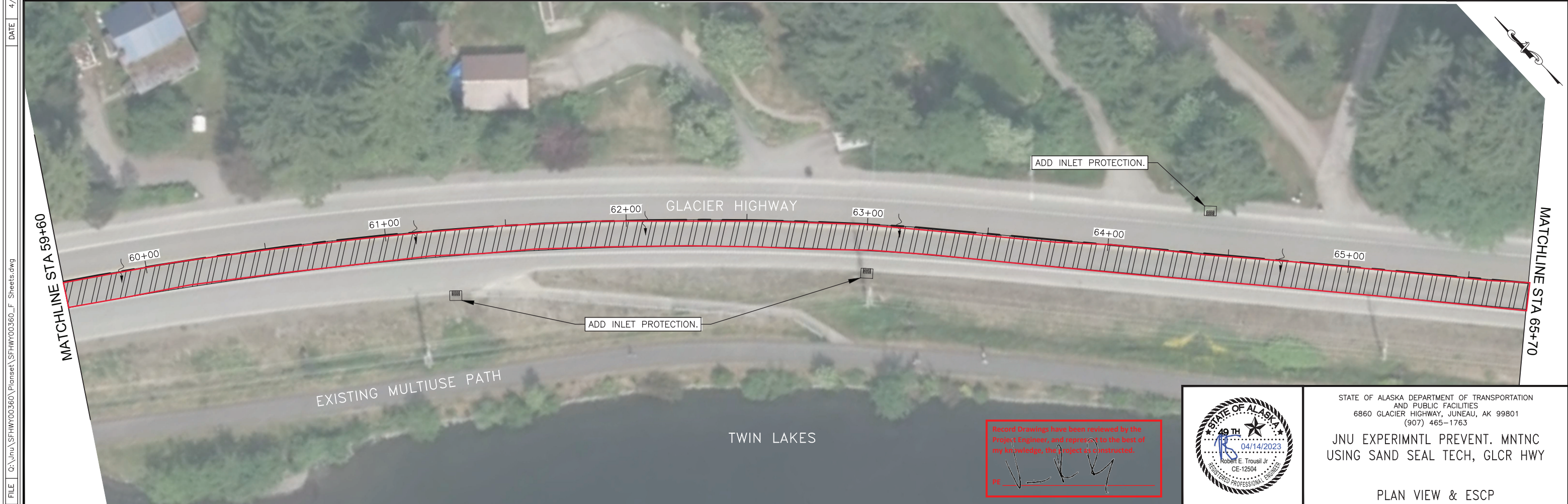
PLAN VIEW & ESCP

FILE G:\nu\SFHWY00360\PlanSet\SFHWY00360\_F\_Sheets.dwg DATE 4/4/2023 17:02 LAYOUT F3 DESIGNED RM CHECKED BT, TE DRAFTED MS

NO.	DATE	REVISION	STATE	PROJECT DESIGNATION	YEAR	SHEET NO.	TOTAL SHEETS
			ALASKA	0003269\SFHWY00360	2023	F4	17



ESCP NOT SEALED IN ACCORDANCE WITH ALASKA HIGHWAY PRECONSTRUCTION MANUAL SECTION 1120.7.3 DATED NOVEMBER 15, 2013



Record Drawings have been reviewed by the Project Engineer, and represent to the best of my knowledge, the project as constructed.



STATE OF ALASKA DEPARTMENT OF TRANSPORTATION AND PUBLIC FACILITIES  
6860 GLACIER HIGHWAY, JUNEAU, AK 99801  
(907) 465-1763

JNU EXPERIMNTL PREVENT. MNTNC USING SAND SEAL TECH, GLCR HWY

PLAN VIEW & ESCP

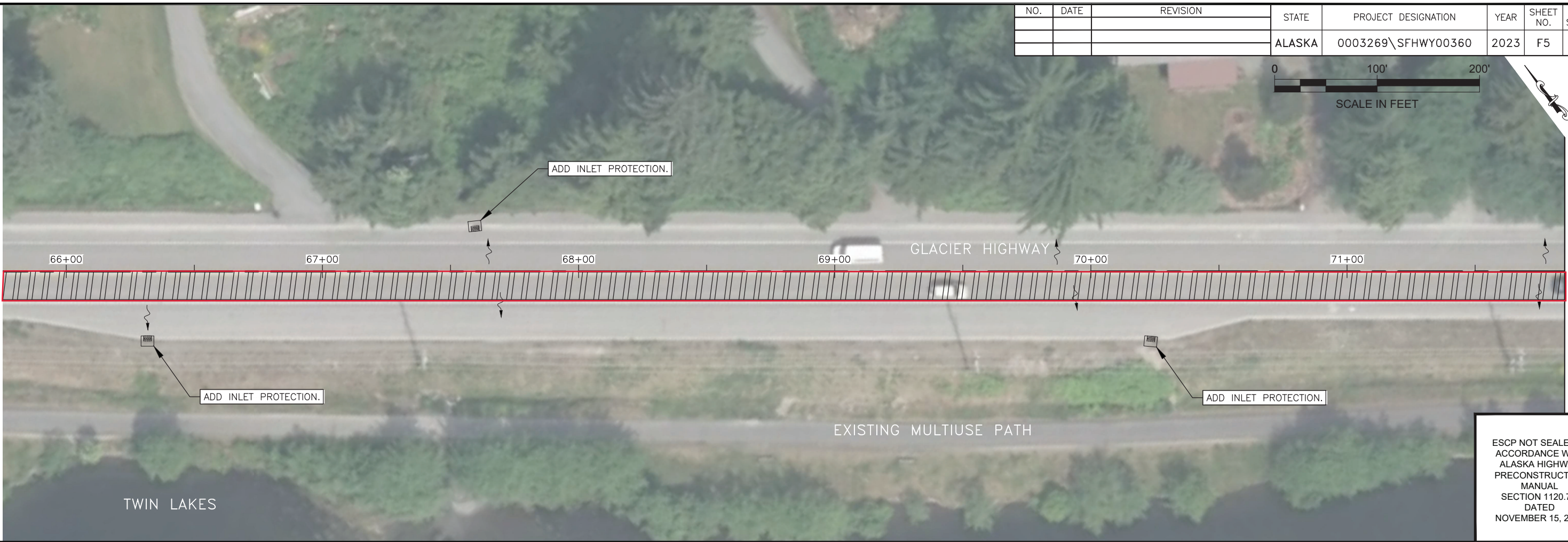
FILE G:\nu\SFHWY00360\PlanSet\SFHWY00360\_F\_Sheets.dwg DATE 4/4/2023 17:02 LAYOUT F4 DESIGNED RM CHECKED BT, TE DRAFTED MS

NO.	DATE	REVISION	STATE	PROJECT DESIGNATION	YEAR	SHEET NO.	TOTAL SHEETS
			ALASKA	0003269\SFHwy00360	2023	F5	17



MATCHLINE STA 65+70

MATCHLINE STA 71+80

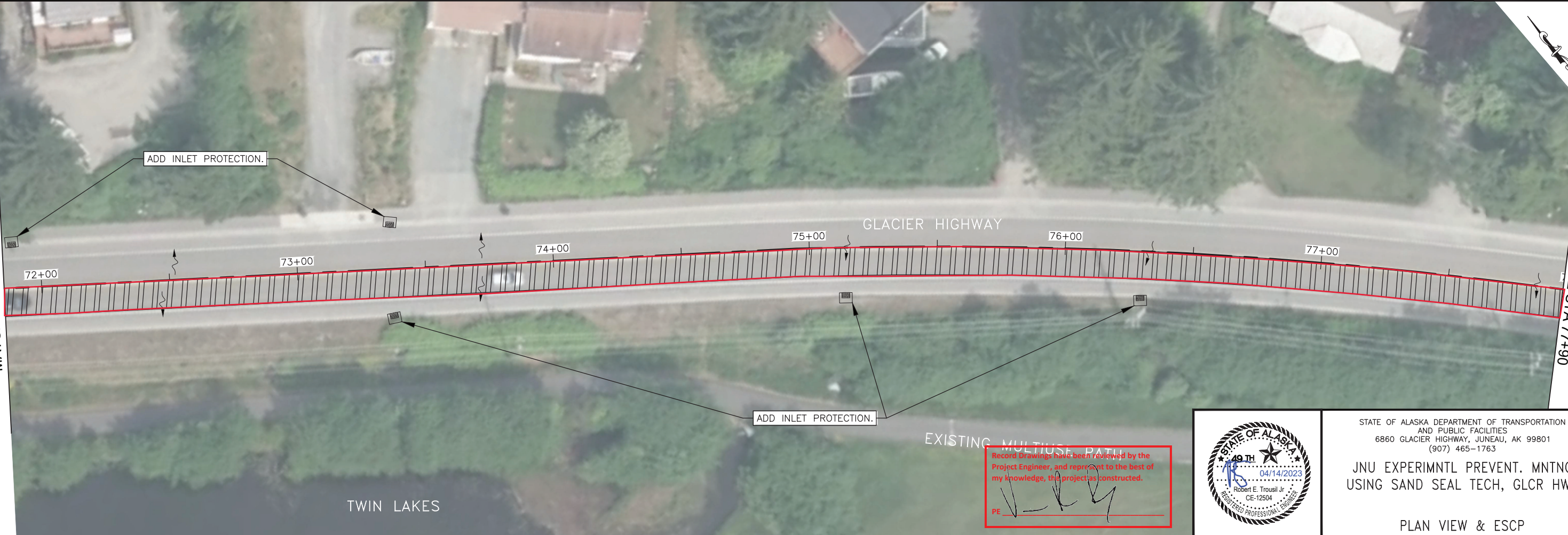


ESCP NOT SEALED IN ACCORDANCE WITH ALASKA HIGHWAY PRECONSTRUCTION MANUAL SECTION 1120.7.3 DATED NOVEMBER 15, 2013

FILE G:\nu\SFHWY00360\PlanSet\SFHwy00360\_F\_Sheets.dwg DATE 4/4/2023 17:02 LAYOUT F5 DESIGNED RM CHECKED BT, TE DRAFTED MS

MATCHLINE STA 71+80

MATCHLINE STA 77+90



Record Drawings have been reviewed by the Project Engineer, and represent to the best of my knowledge, the project as constructed.

PE *[Signature]*

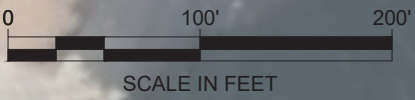


STATE OF ALASKA DEPARTMENT OF TRANSPORTATION AND PUBLIC FACILITIES  
6860 GLACIER HIGHWAY, JUNEAU, AK 99801  
(907) 465-1763

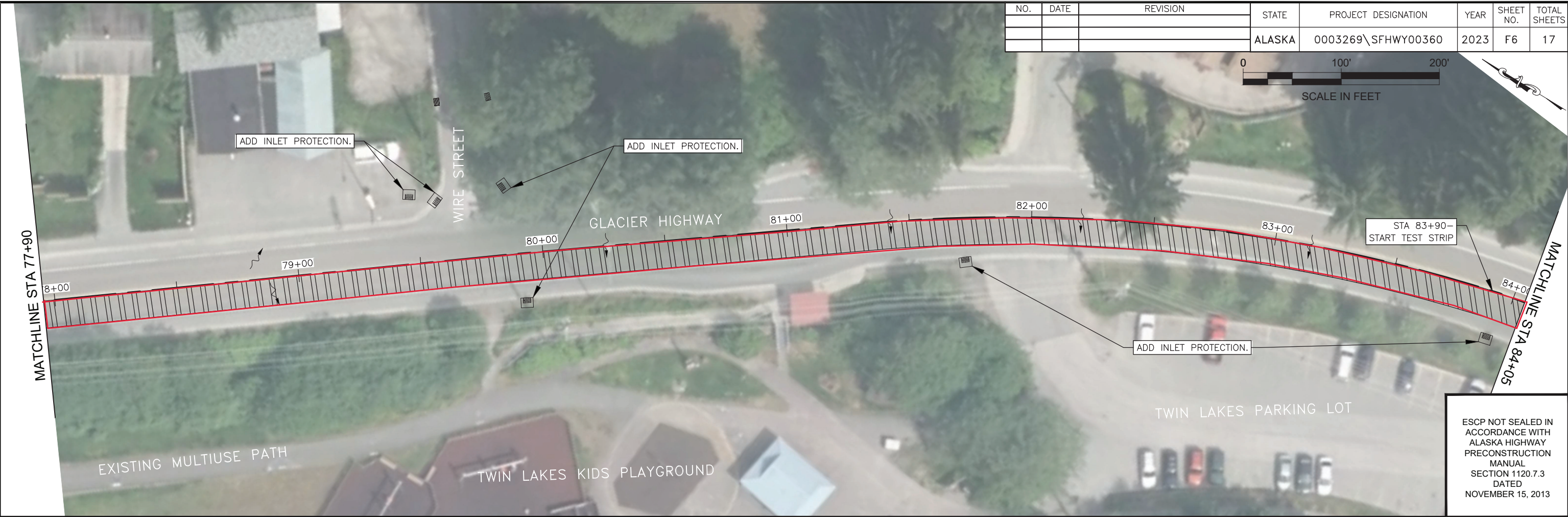
JNU EXPERIMNTL PREVENT. MNTNC USING SAND SEAL TECH, GLCR HWY

PLAN VIEW & ESCP

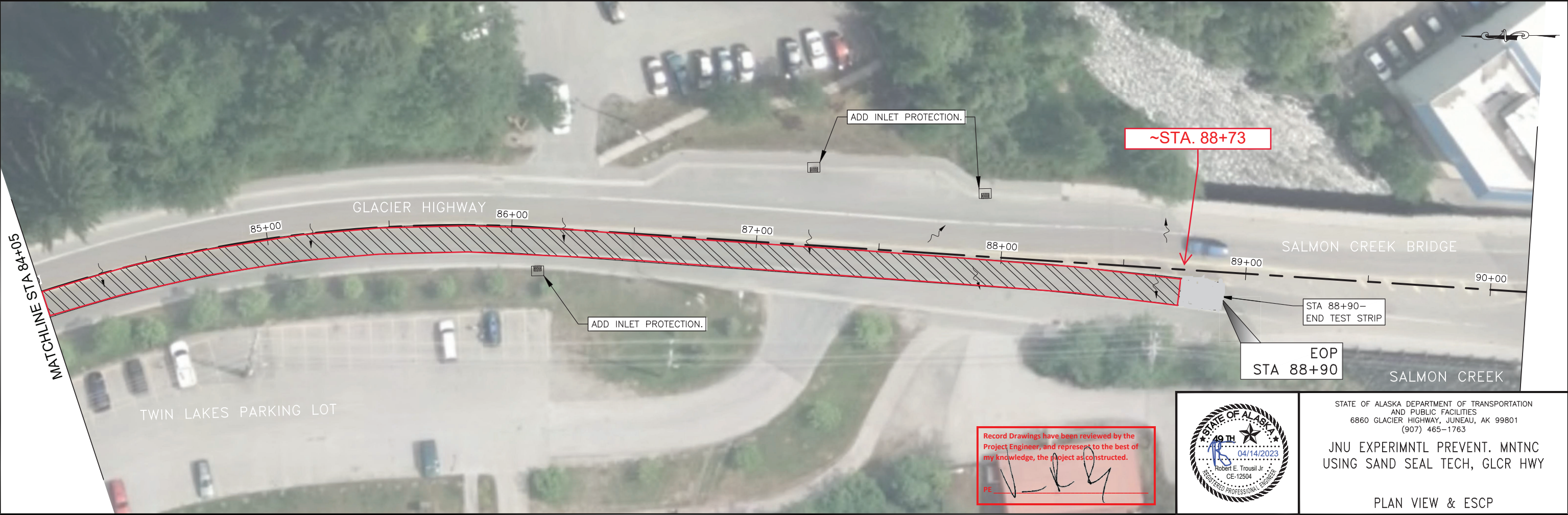
NO.	DATE	REVISION	STATE	PROJECT DESIGNATION	YEAR	SHEET NO.	TOTAL SHEETS
			ALASKA	0003269\SFWHY00360	2023	F6	17



FILE G:\nu\SFHWY00360\PlanSet\SFWHY00360\_F\_Sheets.dwg  
 DATE 4/4/2023 17:02  
 LAYOUT F6  
 DESIGNED RM  
 CHECKED BT, TE  
 DRAFTED MS



ESCP NOT SEALED IN  
 ACCORDANCE WITH  
 ALASKA HIGHWAY  
 PRECONSTRUCTION  
 MANUAL  
 SECTION 1120.7.3  
 DATED  
 NOVEMBER 15, 2013



Record Drawings have been reviewed by the  
 Project Engineer, and represent to the best of  
 my knowledge, the project as constructed.  
 PE *[Signature]*



STATE OF ALASKA DEPARTMENT OF TRANSPORTATION  
 AND PUBLIC FACILITIES  
 6860 GLACIER HIGHWAY, JUNEAU, AK 99801  
 (907) 465-1763

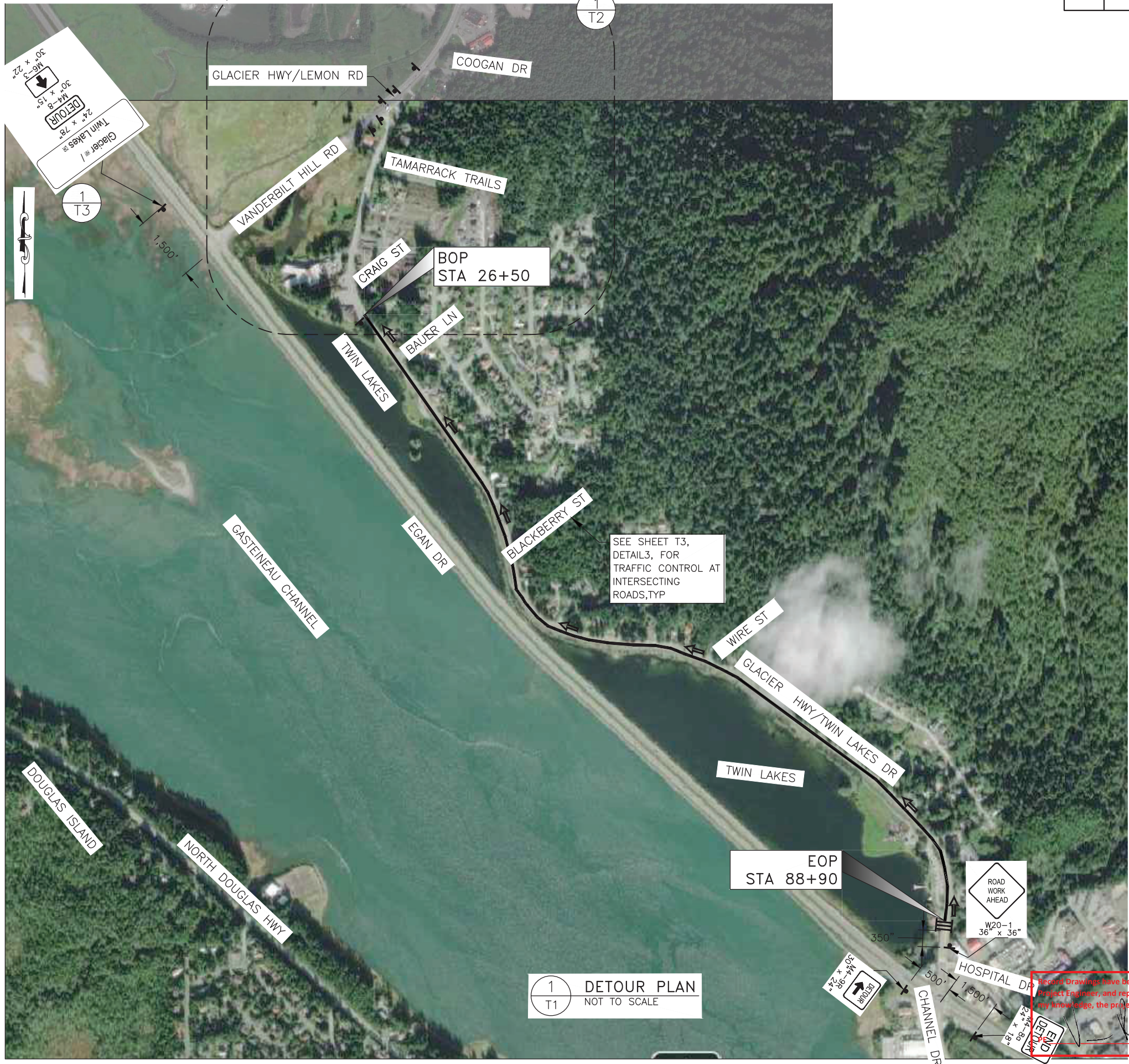
JNU EXPERIMNTL PREVENT. MNTNC  
 USING SAND SEAL TECH, GLCR HWY

PLAN VIEW & ESCP

NO.	DATE	REVISION	STATE	PROJECT DESIGNATION	YEAR	SHEET NO.	TOTAL SHEETS
			ALASKA	0003269\SFWHY00360	2023	T1	17

**TRAFFIC CONTROL NOTES:**

1. IT IS THE INTENT OF THIS TRAFFIC CONTROL PLAN (TCP) TO ILLUSTRATE SOME, NOT ALL, OF THE TRAFFIC CONTROL SETUPS WHICH WILL BE REQUIRED ON THIS PROJECT. PLANS FOR CONFIGURATIONS NOT COVERED BY THE TCP SHALL BE CREATED BY THE CONTRACTOR IN ACCORDANCE WITH SECTION 643 AND SUBMITTED TO THE ENGINEER FOR APPROVAL PER SUBSECTION 643-1.03.
2. SEE SUBSECTION 643-3.08 FOR CONSTRUCTION PHASING REQUIREMENTS.
3. POST PARKING LANE CLOSURE NOTICES, INCLUDE THE TIME AND DATE OF CLOSURE, 3 DAYS PRIOR TO CLOSING PARKING LANES ALONG GLACIER HIGHWAY/TWIN LAKES DRIVE. PLACE THE CLOSURE NOTICES AT EACH PARKING LANE THAT WILL BE AFFECTED BY CONSTRUCTION.
4. CONSTRUCTION SIGNS SHALL BE PLACED SUCH THAT THEY DO NOT OBSCURE EXISTING TRAFFIC SIGNS. PLACE AND SPACE CONSTRUCTION SIGNS AND DEVICES IN ACCORDANCE WITH SECTION 643 AND THE ALASKA TRAFFIC MANUAL.
5. NOTIFY THE CITY AND BOROUGH OF JUNEAU'S PARK AND RECREATION DEPARTMENT THROUGH THE ENGINEER 48 HOURS PRIOR TO DETOURING BICYCLE TRAFFIC TO THE TWIN LAKES MULTIUSE PATH.



**1**  
T1  
**DETOUR PLAN**  
NOT TO SCALE

TRAFFIC CONTROL LEGEND	
	CONSTRUCTION SIGN
	TRAFFIC FLOW
	TYPE III BARRICADE
	WORK ZONE

Record Drawings have been reviewed by the Project Engineer, and represent to the best of my knowledge, the project as constructed.

TCP NOT SEALED IN ACCORDANCE WITH ALASKA HIGHWAY PRECONSTRUCTION MANUAL SECTION 1400.3.5 DATED JANUARY 30, 2012.

STATE OF ALASKA DEPARTMENT OF TRANSPORTATION AND PUBLIC FACILITIES  
6860 GLACIER HIGHWAY, JUNEAU, AK 99801  
(907) 465-1763

JNU EXPERIMENTAL PREVENT. MNTNC USING SAND SEAL TECH, GLCR HWY

TRAFFIC CONTROL PLANS

FILE Q:\nu\SFWHY00360\PlanSet\SFWHY00360\_T1.dwg DATE 4/12/2023 16:44 LAYOUT T1 DESIGNED RM CHECKED BT, TE DRAFTED MS

NO.	DATE	REVISION	STATE	PROJECT DESIGNATION	YEAR	SHEET NO.	TOTAL SHEETS
			ALASKA	0003269\SFHWY00360	2023	T2	17



**TRAFFIC CONTROL NOTES:**

1. IT IS THE INTENT OF THIS TRAFFIC CONTROL PLAN (TCP) TO ILLUSTRATE SOME, NOT ALL, OF THE TRAFFIC CONTROL SETUPS WHICH WILL BE REQUIRED ON THIS PROJECT. PLANS FOR CONFIGURATIONS NOT COVERED BY THE TCP SHALL BE CREATED BY THE CONTRACTOR IN ACCORDANCE WITH SECTION 643 AND SUBMITTED TO THE ENGINEER FOR APPROVAL PER SUBSECTION 643-1.03.
2. SEE SUBSECTION 643-3.08 FOR CONSTRUCTION PHASING REQUIREMENTS.
3. POST PARKING LANE CLOSURE NOTICES, INCLUDE THE TIME AND DATE OF CLOSURE, 3 DAYS PRIOR TO CLOSING PARKING LANES ALONG GLACIER HIGHWAY/TWIN LAKES DRIVE. PLACE THE CLOSURE NOTICES AT EACH PARKING LANE THAT WILL BE AFFECTED BY CONSTRUCTION.
4. CONSTRUCTION SIGNS SHALL BE PLACED SUCH THAT THEY DO NOT OBSCURE EXISTING TRAFFIC SIGNS. PLACE AND SPACE CONSTRUCTION SIGNS AND DEVICES IN ACCORDANCE WITH SECTION 643 AND THE ALASKA TRAFFIC MANUAL.
5. NOTIFY THE CITY AND BOROUGH OF JUNEAU'S PARK AND RECREATION DEPARTMENT THROUGH THE ENGINEER 48 HOURS PRIOR TO DETOURING BICYCLE TRAFFIC TO THE TWIN LAKES MULTIUSE PATH.

TRAFFIC CONTROL LEGEND	
	CONSTRUCTION SIGN
	TRAFFIC FLOW
	TYPE III BARRICADE
	WORK ZONE

1 SIGNING DETAIL AT BOP  
T2 NOT TO SCALE

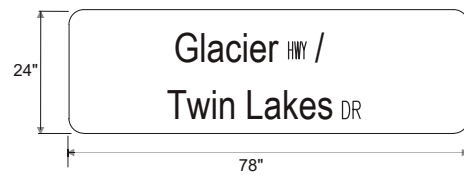
Record Drawings have been reviewed by the Project Engineer, and represent to the best of my knowledge, the project as constructed.  
PE

TCP NOT SEALED IN ACCORDANCE WITH ALASKA HIGHWAY PRECONSTRUCTION MANUAL SECTION 1400.3.5 DATED JANUARY 30, 2012.

STATE OF ALASKA DEPARTMENT OF TRANSPORTATION AND PUBLIC FACILITIES  
6860 GLACIER HIGHWAY, JUNEAU, AK 99801  
(907) 465-1763  
JNU EXPERIMENTAL PREVENT. MNTNC USING SAND SEAL TECH, GLCR HWY  
TRAFFIC CONTROL PLANS

FILE Q:\jnu\SFH\00360\Plans\SFHWY00360\_T3.dwg DATE 4/7/2023 14:31 LAYOUT T3 DESIGNED RM CHECKED BT, TE DRAFTED MS

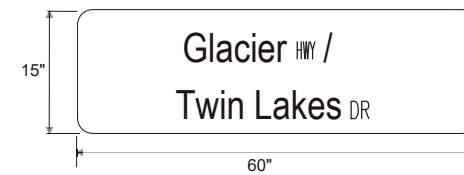
NO.	DATE	REVISION	STATE	PROJECT DESIGNATION	YEAR	SHEET NO.	TOTAL SHEETS
			ALASKA	0003269\SFH\00360	2023	T3	17



NOTES:

- SIGN MUST HAVE A BLACK LEGGED AND BORDER ON AN ORANGE BACKGROUND.

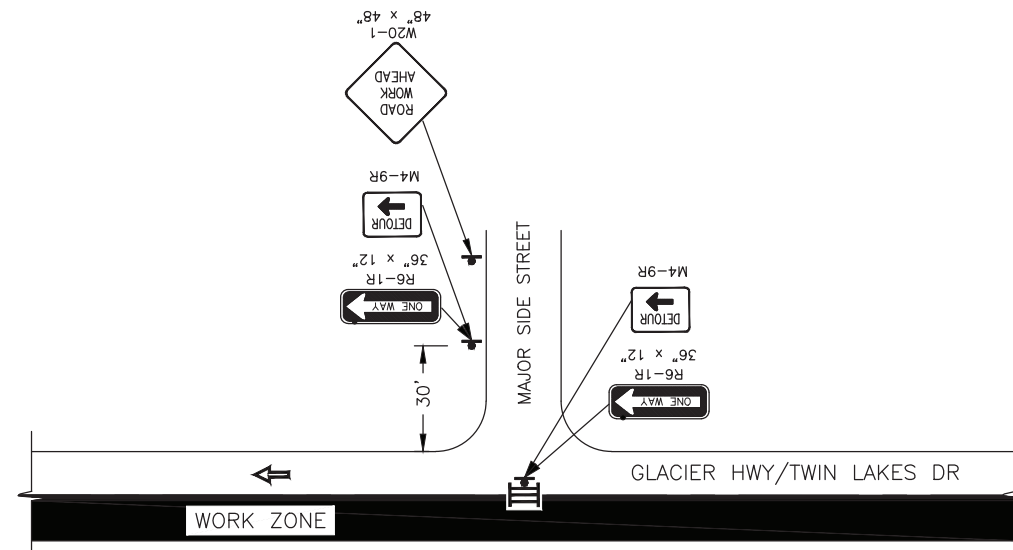
1 CUSTOM SIGN ON EXPRESSWAY RD  
T3 NOT TO SCALE



NOTES:

- SIGN MUST HAVE A BLACK LEGGED AND BORDER ON AN ORANGE BACKGROUND.

2 CUSTOM SIGN FOR URBAN RD  
T3 NOT TO SCALE



3 TRAFFIC CONTROL AT INTERSECTING ROADS  
T3 NOT TO SCALE

TRAFFIC CONTROL NOTES:

- IT IS THE INTENT OF THIS TRAFFIC CONTROL PLAN (TCP) TO ILLUSTRATE SOME, NOT ALL, OF THE TRAFFIC CONTROL SETUPS WHICH WILL BE REQUIRED ON THIS PROJECT. PLANS FOR CONFIGURATIONS NOT COVERED BY THE TCP SHALL BE CREATED BY THE CONTRACTOR IN ACCORDANCE WITH SECTION 643 AND SUBMITTED TO THE ENGINEER FOR APPROVAL PER SUBSECTION 643-1.03.
- SEE SUBSECTION 643-3.08 FOR CONSTRUCTION PHASING REQUIREMENTS.
- POST PARKING LANE CLOSURE NOTICES, INCLUDE THE TIME AND DATE OF CLOSURE, 3 DAYS PRIOR TO CLOSING PARKING LANES ALONG GLACIER HIGHWAY/TWIN LAKES DRIVE. PLACE THE CLOSURE NOTICES AT EACH PARKING LANE THAT WILL BE AFFECTED BY CONSTRUCTION.
- CONSTRUCTION SIGNS SHALL BE PLACED SUCH THAT THEY DO NOT OBSCURE EXISTING TRAFFIC SIGNS. PLACE AND SPACE CONSTRUCTION SIGNS AND DEVICES IN ACCORDANCE WITH SECTION 643 AND THE ALASKA TRAFFIC MANUAL.
- NOTIFY THE CITY AND BOROUGH OF JUNEAU'S PARK AND RECREATION DEPARTMENT THROUGH THE ENGINEER 48 HOURS PRIOR TO DETOURING BICYCLE TRAFFIC TO THE TWIN LAKES MULTIUSE PATH.

TRAFFIC CONTROL LEGEND	
•	CONE
⚠	CONSTRUCTION SIGN
➡	TRAFFIC FLOW
⚓	TYPE III BARRICADE
■	WORK ZONE

Record Drawings have been reviewed by the Project Engineer, and represent to the best of my knowledge, the project as constructed.  
PE [Signature]

TCP NOT SEALED IN ACCORDANCE WITH ALASKA HIGHWAY PRECONSTRUCTION MANUAL SECTION 1400.3.5 DATED JANUARY 30, 2012.

STATE OF ALASKA DEPARTMENT OF TRANSPORTATION AND PUBLIC FACILITIES  
6860 GLACIER HIGHWAY, JUNEAU, AK 99801  
(907) 465-1763  
JNU EXPERIMNTL PREVENT. MNTNC USING SAND SEAL TECH, GLCR HWY  
TRAFFIC CONTROL PLANS